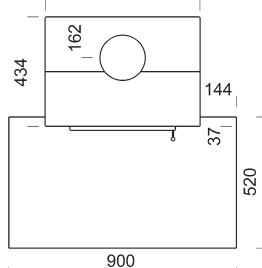




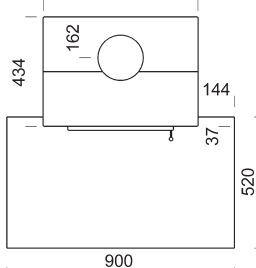
612



DEKO DUE S 1



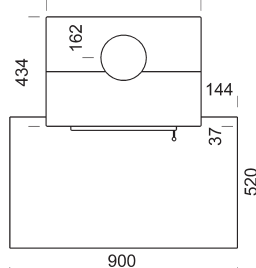
612



DEKO DUE S 2



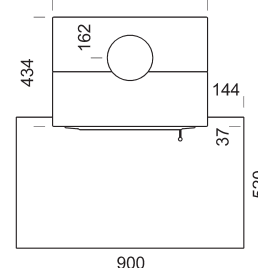
612



DEKO DUE S 3



612

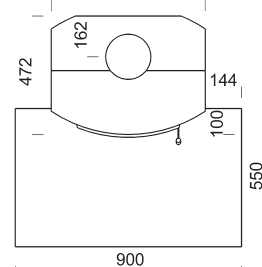


DEKO DUE S 4

Product pictures are with accessories.



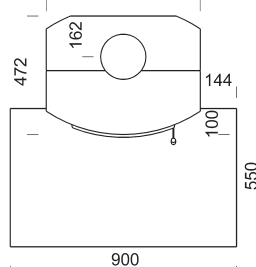
612



DEKO DUE C 1



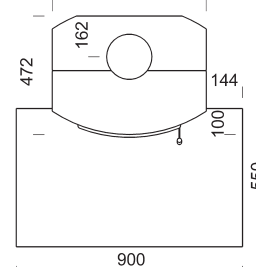
612



DEKO DUE C 2



612



DEKO DUE C 3

PRODUCT INFORMATION:

Nominal heat output:	6 kW
Energy efficiency:	81 %
CO%:	0,07 %

PRODUCT NUMBERS:

Product	Product number	Weight kg	Height mm
DEKO DUE S 1	703330-1	507	1200
DEKO DUE S 2	703330-2	475	1200
DEKO DUE S 3	703330-3	475	1200
DEKO DUE S 4	703330-4	508	1200
DEKO DUE C 1	703340-1	491	1200
DEKO DUE C 2	703340-2	442	1200
DEKO DUE C 3	703340-3	442	1200

ACCESSORIES:

Product	Product number	Weight kg	Height mm
Bottom plinth DS	707921	26	102
Bottom plinth DC	707931	37	102
Floor protector DS/US white	920333		
Floor protector DS/US black	920331		
Floor protector DC white	920330		
Floor protector DC black	920332		
Replacement air damper	920352		

PRODUCT INFORMATION

	FIREWOOD		FLUE CALCULATION VALUES ⁽¹⁾				MAX. FLUE TEMPERATURE IN SECURITY TEST
	Length [cm]	Max amount of wood [kg/h]	Flue gas temperature [°C]	Min. flue draught [Pa]	Mass flow [g/s]	Flue connection Ø (min.)	Temperature °C
Deko Due S / C	25	1,65	255	-12	6,6	150	499

FLUE CONNECTION TABLE

	RECOMMENDED FLUE [mm]	INCOMING AIR
	round Ø	Incoming air pipe location L [mm]
Deko Due S	150	217
Deko Due C	150	253

SAFETY DISTANCES TO COMBUSTIBLE MATERIALS

	CE-approval according to EN 13240		
	Behind	On the sides	Front
Deko Due S / C	350	300	1100

¹⁾ The flue calculation values apply for countries that require flue calculation in accordance with the DIN 18160 and DIN EN 13384 standards.

Take a notice of the countryspecific approvals in section 3

NOTES!

The flue heat category required by the fireplace is T600.

The recommended minimum flue height is 5 m. In countries where the flue calculation is required, should the calculation be done according to the instructions and regulations of the flue calculation.

A damper designed for adjusting the draft is always recommended for a flue connection or flue.

Country- and region-specific regulations must be adhered to when installing the fireplace

